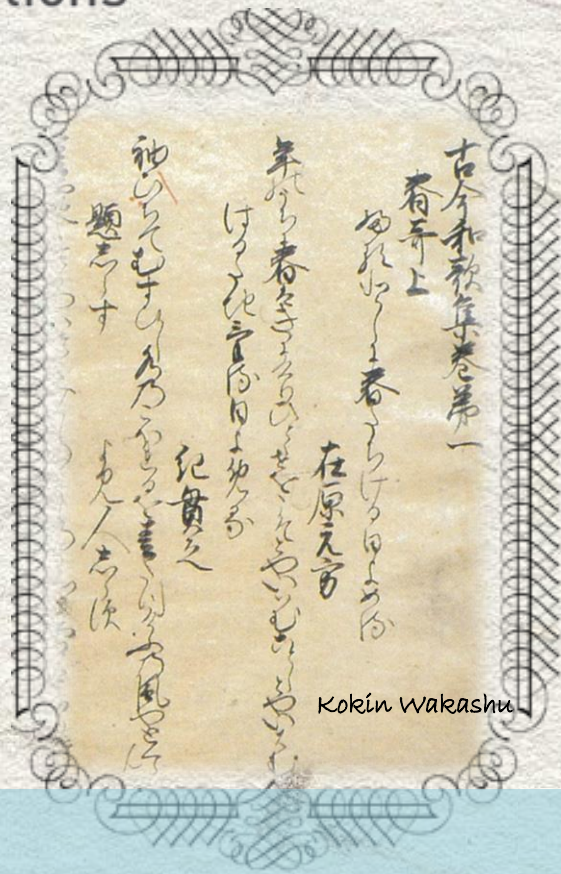
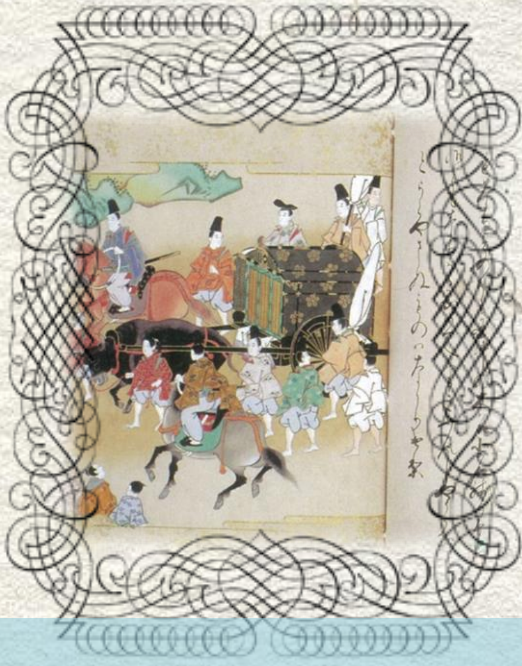




Tohoku University DRR Actions  
Contributing to Global Disaster Resilience

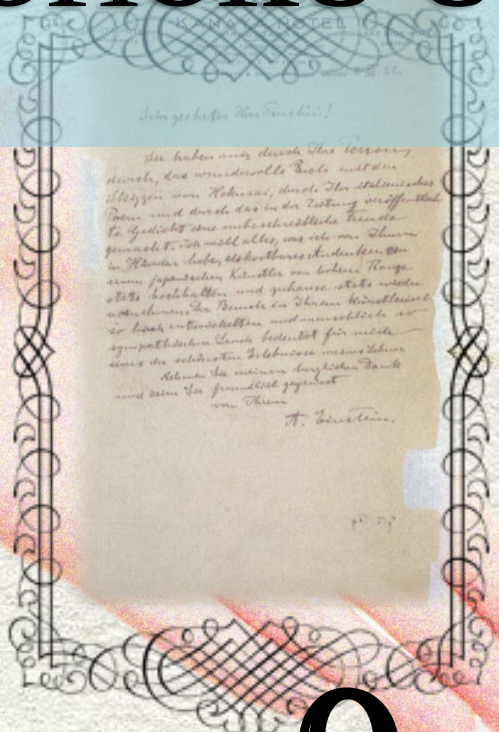
The Story of Bunsho



Kokin Wakashu



# THE AMAZING COLLECTIONS OF TOHOKU UNIVERSITY LIBRARY



Letter from Albert Einstein  
to Bansui Doi



Kunyu anguo Quantu /  
Matteo Ricci

DATE **MARCH 9 (MON) ~ APRIL 10 (FRI)**  
**10 a.m. ~ 5 p.m.**  
※土・日は閉場。ただし、3月14・15日のみ土・日も開催

Admission Free 入場無料

VENUE **Main Library 1F Multi-purpose Room**  
**東北大学附属図書館 本館1号館1階 多目的室**

### ミニコーナー 和紙(Washi corner)

In this corner we are going to introduce Japanese Washi Paper, which has been registered by UNESCO as an intangible cultural heritage in December 2014. And there is also going to be an experience-based corner, where the visitors can touch Washi by hands and have a try to make Origami (Japanese style paper folding) with Washi.

2014年12月にユネスコ無形文化遺産に登録された日本の和紙を紹介します。体験コーナーで、和紙の手触りや日本の折り紙文化をお楽しみください。



# Tohoku University Library

Web: <http://www.library.tohoku.ac.jp/> 27-1 Kawauchi, Aoba-ku Sendai, 980-8576, JAPAN TEL : +81-22-795-5911

